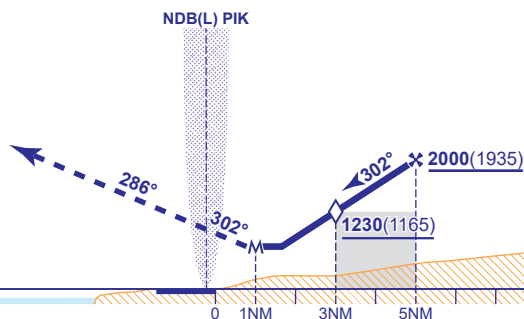


**PRESTWICK**  
**SRA RTR 2NM**  
**RWY 30**  
(ACFT CAT A,B,C,D)



Continuous climb to **3000** Initially, straight ahead to **1300** then climbing turn left onto track 286° continuing to **2500** then climbing turn left to **NDB(L) PIK** to hold at **3000** or as directed.



**CHANGE (12/25):** NE MSA. MAG VAR. MAG HEADINGS.